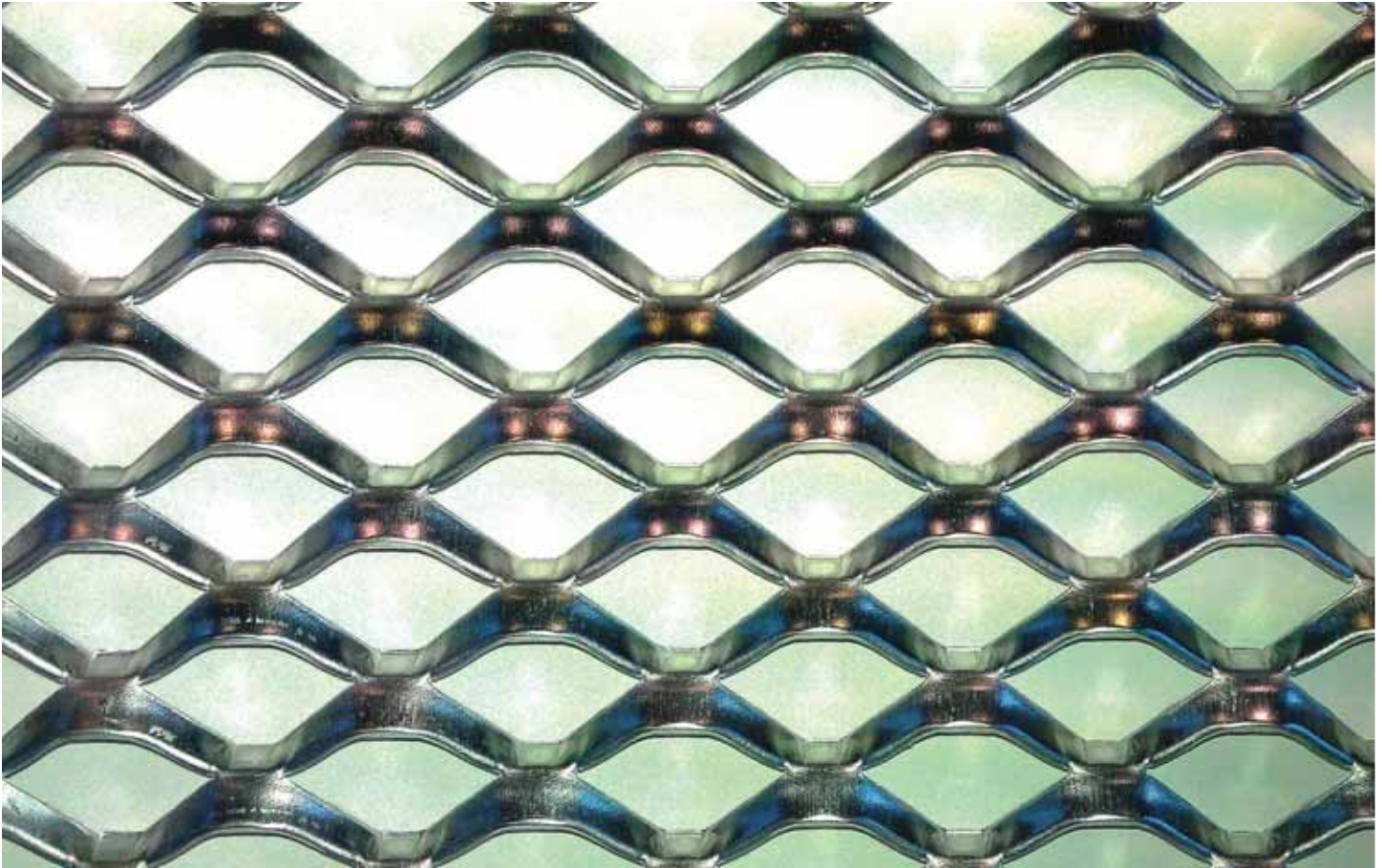




**MARIANitech**<sup>®</sup>  
ARCHITECTURAL SOLUTIONS

## SQUARE 40 NF



1:1

### Dati tecnici - Technical data

Maglia Mesh DL x DC LWD x SWD [mm]	Avanzamento Strand [mm]	Spessore Thickness [mm]	Spessore tot. Total thickness [mm]	Formato Hmax/DL Dimension Hmax/LWD	○ Peso Weight [Kg/mq]	● Peso Weight [Kg/mq]	Vuoto su pieno Open area in % (*)
Q40x26,5	6,5	1,5	11 ÷ 13	2500	2,05	5,80	50
Q40x26,5	6,5	2	11 ÷ 13	2500	2,65	7,75	50
Q40x26,5	6,5	3	11 ÷ 13	2500	4,00	11,60	50

○ ALLUMINIO, ALUMINUM / ● FERRO, ACCIAIO ZINCATO, ACCIAIO INOX, MILD STEEL, GALVANIZED STEEL AND STAINLESS STEEL